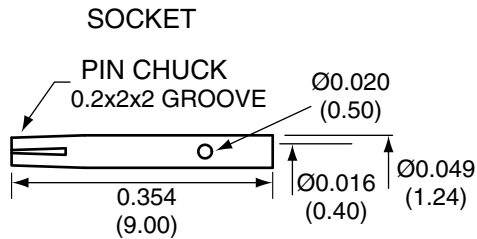


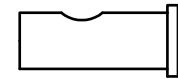
1		
Description	Material	Finish
Body	Brass	Nickel
Socket	BE CU	Gold
Insulation	Teflon	Teflon
O Ring	Si Rubber	Rubber
Washer	Brass	Nickel
Nut	Brass	Nickel
Spacer	Teflon	Teflon
Support	Brass	Nickel



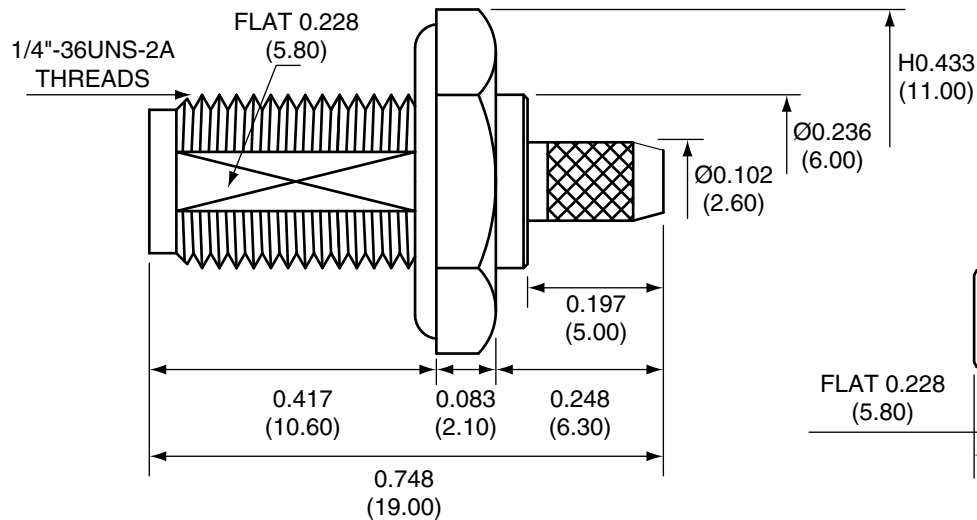
SPACER



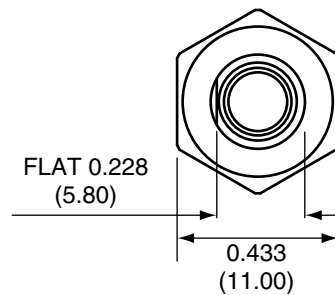
SUPPORT



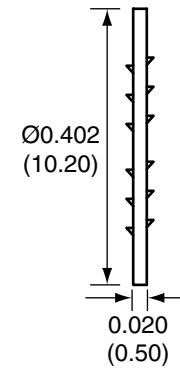
SIDE VIEW



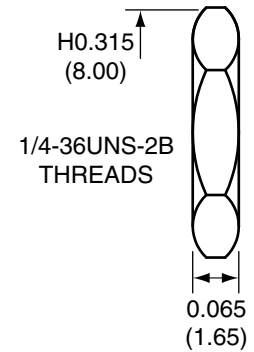
BACK VIEW



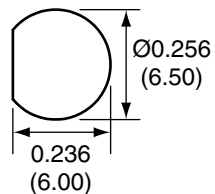
WASHER



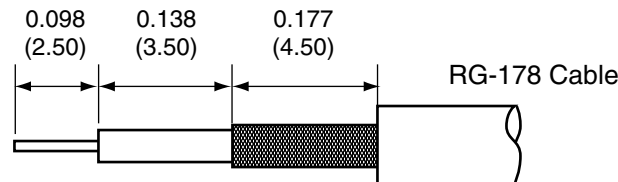
NUT



RECOMMENDED MOUNTING HOLE



RECOMMENDED CABLE STRIPPING DIMENSIONS



CON SMA014-R178 ASSEMBLY INSTRUCTIONS

1. Strip the cable to the recommended dimensions.
2. Solder the support onto the braid.
3. Place the spacer onto the center conductor.
4. Solder or crimp the socket onto the center conductor.
5. Insert the socket, center conductor, spacer, and support into the body until the top of the socket is even with the white insulation in the body.
6. Crimp the tail of the body onto the support with a hex crimp tool.

Title SMA FEMALE BULKHEAD MOUNT CABLE
END CRIMP WITH O-RING FOR RG178 CABLE

Part No. CON SMA014-R178 Revision: 1.0

Dimensions: INCHES (mm) Date: 6/2/2006

CONNECTOR CITY
159 ORT LANE
MERLIN, OR 97532
PH (541)-471-6256
FAX (541)-471-6251

Sheet 1 of 1

CONNECTOR CITY
THE VALUE OF CONNECTIONS